



aristide













# Medar

A Medar rug brings texture and color into the living area,  
creating a warm and cosy atmosphere.

















# Lepis

With the Lepis rug we add another timeless design to our collection of soft viscose pile rugs.







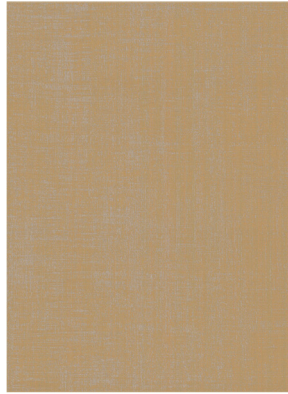








# Overview collection



size 200cm x 290cm

size 280cm x 380cm

## Medar 320 Corn

Composition  
Pile  
Production

70% WO  
30% VI  
Made in Belgium



size 200cm x 290cm

size 280cm x 380cm

## Medar 365 Rust

Composition  
Pile  
Production

70% WO  
30% VI  
Made in Belgium





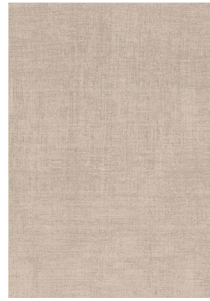
size 200cm x 290cm

size 280cm x 380cm

## Medar 651 Jeans

Composition  
Pile  
Production

70% WO  
30% VI  
Made in Belgium



size 200cm x 290cm

size 280cm x 380cm

## Medar 206 Natural

Composition  
Pile  
Production

70% WO  
30% VI  
Made in Belgium



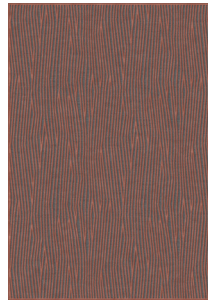
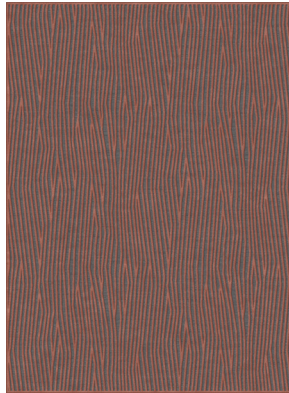
size 200cm x 290cm

size 280cm x 380cm

## Medar 170 Pewter

Composition  
Pile  
Production

70% WO  
30% VI  
Made in Belgium



size 200cm x 300cm

size 280cm x 380cm

## Lepis 226 Bronze

Composition  
Pile  
Production

Base = 92%WO - 8%PA  
100% VI  
Made in Belgium



size 200cm x 300cm

size 280cm x 380cm

## Lepis 150 Slate

Composition  
Pile  
Production

Base = 92%WO - 8%PA  
100% VI  
Made in Belgium



size 200cm x 300cm

size 280cm x 380cm

## Lepis 206 Natural

Composition  
Pile  
Production

Base = 92%WO - 8%PA  
100% VI  
Made in Belgium



# Onderhoud

Regelmatig stofzuigen. Bij het eerste gebruik is het volstrekt normaal dat grote restvezels los komen. Bij vlekken onmiddellijk met een vochtige doek deppen op de vlek (niet wrijven!). Professionele tapijtreiniging of droogkuis aanbevolen.

# Entretien

Aspirer régulièrement. Lorsqu'un tapis est neuf, il est tout à fait normal qu'il perd ses excès de matière sous forme de peluche. En cas de taches, tamponnez immédiatement avec un chiffon humide (ne pas frotter!). Nettoyage de tapis professionnel ou nettoyage à sec recommandé.

# Maintenance

Regular vacuuming. At first use it is completely normal that large residual fibers come loose. In case of stains, dab the stain immediately with a damp cloth (do not rub!). Professional carpet cleaning or dry cleaning recommended.

# Pflegeanleitung

Regelmäßig staubsaugen. Beim ersten Gebrauch ist es völlig normal, dass es mehrere lose Fasern gibt. Bei Flecken unmittelbar mit einem feuchten Tuch auf die Flecken tupfen (nicht reiben). Es wird eine professionelle Teppichreinigung oder eine chemische Reinigung empfohlen.



